



Look Book

FALL/WINTER 2010



stella & dot™

Take your *ordinary* to
EXTRAORDINARY with *effortless style*.

We've traveled the world to find inspiration in strong women, rich cultures and exotic designs. And yet, we find there's nothing like the inspiration we get from being right at home. Where we're surrounded by the ones who are most important to us. Where the littlest moments with them—a belly laugh, Sunday morning pancakes, snuggling in bed before the day begins, and a kiss in the sunshine—give us the richest experiences.

Our newest collection gives the ordinary moments of your life the extraordinary style they deserve—with truly wearable, ownable pieces that enhance your very personal style. No extra effort required.

- The Vintage Luxe Collection is couture for everyday, paying homage to the details like you do.
- The Metro Chic Collection puts an edgy twist on femininity with lots of dimension.
- The Day to Night Collection multitasks as much as you do, wearing as gorgeously with denim as with a little black dress.
- The La Coco Collection is your own style statement that you create with versatile, mix-and-match chains, strands, and brooches.
- The Little Girls Collection is a whimsical tribute to who matters most and her growing sense of style.

Stella & Dot is a company inspired by and created for strong women living amazing and ordinary lives with extraordinary grace and style. If that sounds good to you, you just might feel right at home in a flexible career as a Stella & Dot Stylist. It's the modern home-based business for our times. At Stella & Dot, whether you represent our jewelry line, host a Trunk Show with your girlfriends, or wear one of our fabulous pieces, home is always where the start is.

Xo- *Jessica*

JESSICA HERRIN
CEO & FOUNDER





90 - 100





{ She's wearing... }

- Nolita Necklace
- Ava Cupchain Earrings (see page 7)
- Belle Fleur Ring - Hematite (see page 7)

Nolita Necklace

Vamp or revamp your wardrobe with custom-plated, cascading antiqued metal chains, delicate cupchain, and hand-embroidered metal studs. Approximately 17.5" for beaded section, 14.5" shortest strand to 26.5" longest strand.

N150 \$198



The cascading mixed plated chains are combined with a ribbon entirely covered with hand-embroidered sequins and metal studs.

Metro Chic

FEMININITY WITH AN EDGE

Each bead is sewn by hand onto this grosgrain ribbon.

The loose hand knot in the necklace strands adds an unexpected touch.



Blythe Harris

Chief Creative Officer

Blythe Harris studied fashion and accessories design at the prestigious Parsons School of Design in Paris. She's held top positions at DeBeers, LVMH, and Banana Republic. She's also studied design with artisans in Ecuador, learned metal-smithing in Mexico, and worked with tribal artisans in India.





a



b

As seen in
Lucky

c

{ She's wearing... }

- Musette Necklace
- Vintage Twist Bracelets in Silver and Gold (see page 24)
- Ava Cupchain Earrings

a. Musette Necklace

Glossy faux pearls on grosgrain ribbon intersect with chunky chains and hand-sewn crystals for a deconstructed look layered for instant style. A loose hand knot adds the perfect whimsical touch. 16" shortest strand to 27" longest strand. **N151 \$178**

b. Ava Cupchain Earrings

Brilliant glass stones in antiqued setting. **E1012S \$22**

c. Belle Fleur Ring - Hematite

Handset pave crystal petals on blackened metal show off a faceted stone center for a ring that's truly opulent. Adjustable band fits any finger (sizes 5-9). **R105H \$49**

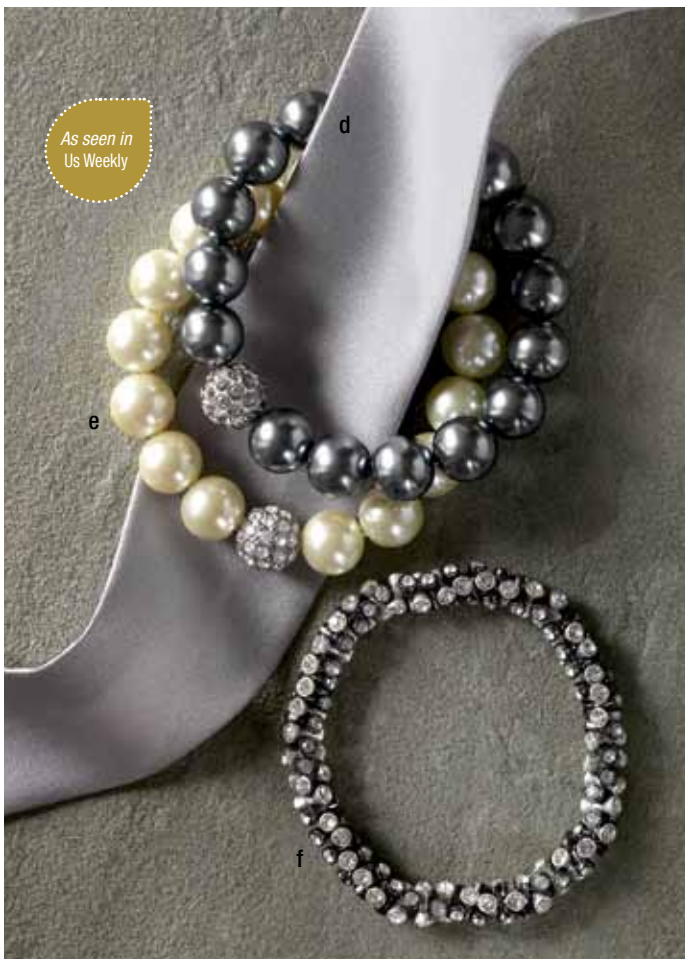
Soirée Pearl Pave Bracelet

Shimmering glass pearls with a handset Czech crystal bauble. Stretchable bracelet adjusts to fit with a 2.5" inner diameter.

- d. Grey** **B817G \$29**
- e. Ivory** **B817I \$29**

f. Vintage Twist Bracelet - Silver

Alternating silver and hematite with handset stones spiraling around your wrist for easy, everyday sparkle. Stretchable bracelet adjusts to fit with a 2.5" inner diameter. Fits medium to large wrists. (Also available in gold, see pg 24). **B121S \$39**



As seen in
Us Weekly

d

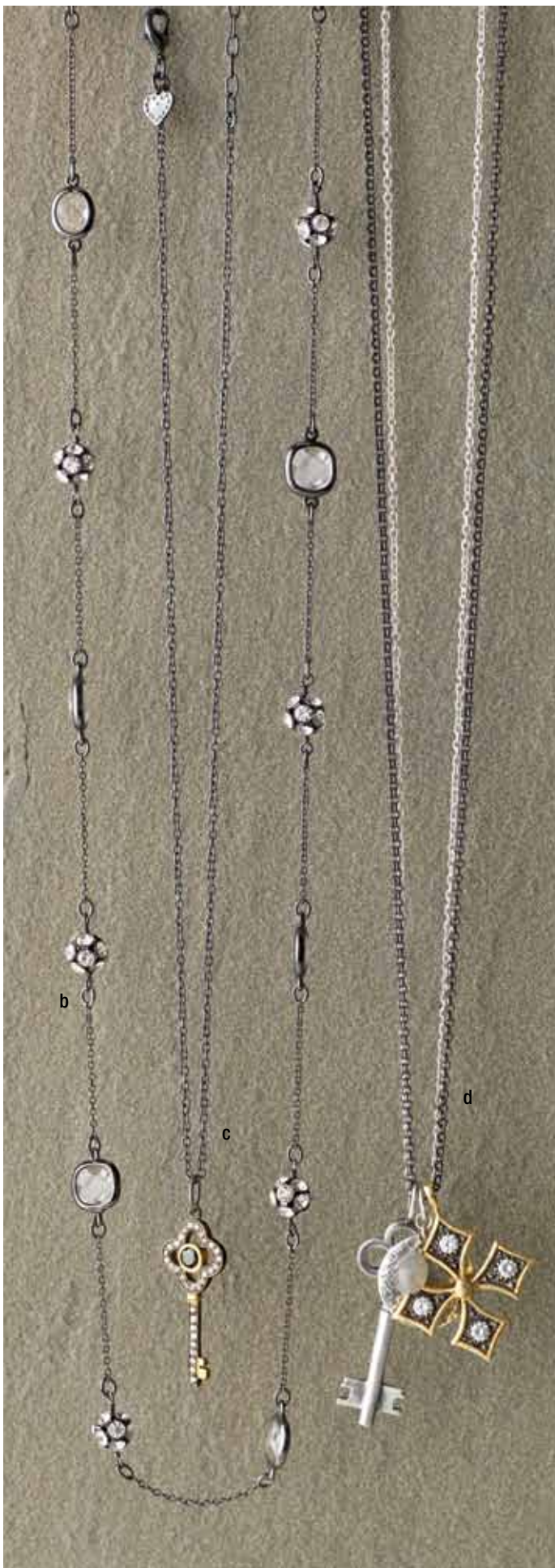
e

f

{ She's wearing... }

- Cascading Chain Necklace
- Liv Multi Charm Necklace
- Vintage Twist Bracelets in Silver
(see page 7) and Gold (see page 24)





a. Cascading Chain Necklace

Long layers of silver plated chains finished with chic braiding on each side. Approximately 34" shortest strand to 43" longest strand with 2" extender. Lobster clasp closure. **N123S \$69**

b. Chelsea Necklace - Hematite

Layer on the charm with this blackened metal chain. Handset pave balls alternate with chanel stones. Wear it long or doubled up. Approximately 38" length with 2" extender. Lobster clasp closure. *(Available in gold, see page 11).* **N131H \$59**

c. Clover Key Necklace

The perfect layering piece. A blackened metal chain with an ornate key pendant adorned with black and white CZs. Approximately 19" length with 2" extender. Lobster clasp closure. **N171H \$54**

d. Liv Multi Charm Necklace

The key to layers of style, this charm necklace combines a Maltese cross, a key and a vintage inspired coin. Approximately 30" length with 2" extender. Lobster clasp closure. **N159 \$69**

e. Soirée Earrings - Silver

Handset Czech crystals adorn a delicate silver ball. Sterling silver ear wires, .50" drop. *(Also available in gold, see page 10).* **E1001S \$39**

f. Stackable Deco Rings *(sold in set of 3)*

Luxe silver plated rings adorned with sparkling CZs. Sizes 5-9. **R805S5-R805S9 \$49**





a. Alexa Fringe Necklace

Very fashion insider, this necklace combines rose gold, yellow gold and copper plating with handset champagne cupchain stones—all tied up or down with a brown velvet ribbon. Approximately 18.25" of stones, 18" of velvet ribbon on each side, ribbon tie closure.

N134G **\$89**

b. Soirée Earrings - Gold

Handset Czech crystals adorn a delicate gold ball. Gold vermeil ear wires, .50" drop. (Also available in silver, see page 9).

E1001G **\$39**

c. Perfect Faceted Earrings - Smoky

A single perfect handcut smoky quartz drop with gold vermeil rings and ear wires. 1.12" length.

E617SG **\$39**

d. Stackable Band Rings (sold in set of 5)

This classic set of 5 hammered band rings combine sterling silver and gold vermeil. Available in sizes 5-9.

R802GS/55-R802GS/59 **\$49**



e. Signature Clover Drop Earrings

Gold plated brass is made to dangle in our signature clover cut-out motif, with warm citrine colored glass stones. Approximately 1.75" length, excluding ear wire. Gold vermeil ear wire. E105G \$49

f. Jasmine Stackable Stone Ring

Handcut stones, precious metal. Size 5-9. (Available in other colors, see page 56). Triangle lemon quartz & gold vermeil. R800LG5-R800LG9 \$39

g. Chelsea Necklace - Gold

Layer on the charm with this gold chain. Handset pave balls alternate with peach chanel stones. Wear it long or doubled up. Approximately 38" length. Lobster clasp closure. (Available in hematite, see page 9). N131G \$59

h. Signature Clover Necklace

Doubled or long, this gold plated chain is accented with our signature clover motif. 38" length. Lobster clasp closure. N101G \$59

i. Baby Flower Post Earrings

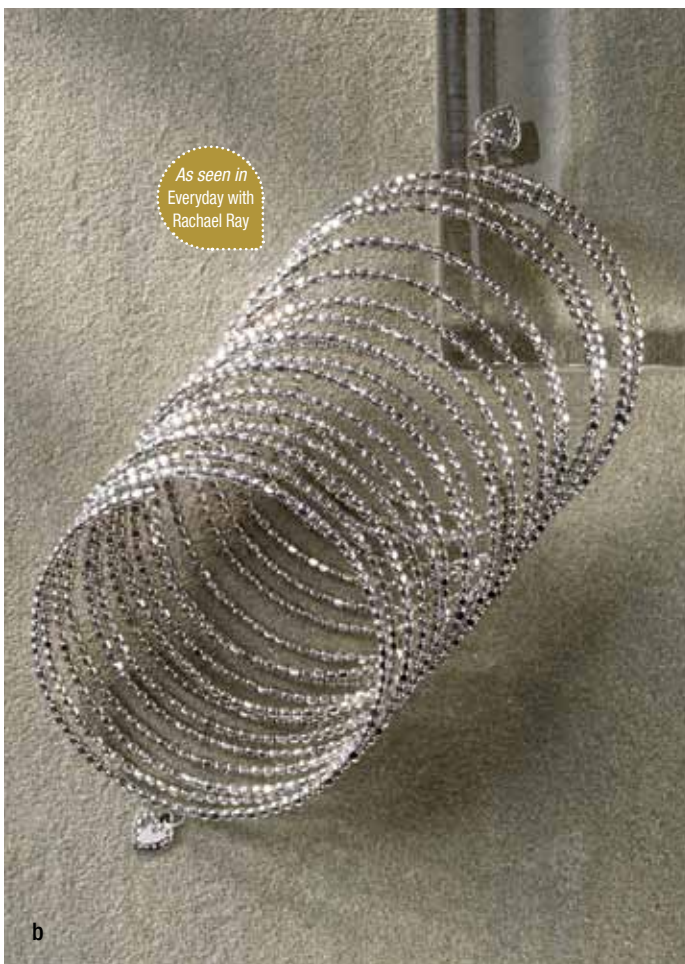
Simply adorable tiny handset CZs in gold vermeil. Post. E109G \$24





As seen in
Family Circle

a



{ She's wearing... }

• Avery Chains & Pearl Necklace

a. Avery Chains and Pearl Necklace

Five antiqued silver plated chains dripping with freshwater pearls. 18.5" shortest strand to 24" longest strand, toggle closure. **N1009S \$69**

b. Bardot Spiral Bangle

A metallic coil of silver with the look of stacked bangles. Finished off with our tiny signature heart. Approximately 2.5" inner diameter. Fits small to large wrists. **B101S \$49**

c. Grace Pearl Earrings - Grey

The go with everything classic. Grey freshwater pearls dangle from sterling silver rings. 1" drop. Color may vary (*Available in ivory and gold, see page 27*).

E1002GR \$29

d. Lucky Seven Rings (*Set of 7*)

Sterling silver with signature handmade detail. When worn together, rings measure 5/8" width on finger. Sizes 5-9.

R1000S/75-R1000S/79 \$54

e. Pearl Drop Earrings

Luscious pearls with sterling silver caps dangle from silver ear wires, .5" drop.

E1013S \$29





{ She's wearing... }

- Adrienne Mixed Chain Necklace
- Soirée Earrings in Silver

a





a. Adrienne Mixed Chain Necklace

Antiqued chains and cupchain wrap together to create a stunning lariat. Wear multiple ways – long, short, or wrapped twice. Approximately 42.5" length.

N1012S **\$118**

b. Adrienne Chain Earrings

Antiqued chains and cupchain dangle from sterling silver ear wires. Approximately 3" length.

E1006S **\$39**

c. Colette Necklace

Ultra-femme braided blackened chain with faux pearls and cupchain combined with a blush colored grosgrain ribbon. 18" ribbon on each side, 14" chain and pearl braid. Self-tie.

N114S **\$138**

d. Soirée Earrings - Silver

Handset Czech crystals adorn a delicate silver ball. Sterling silver ear wires, .50" drop. (Also available in gold, see page 10).

E1001S **\$39**

Actress Tia Carrere



a. Sadie Links Necklace

This updated take on the bold chain combines tortoise, hand-painted enamel, and shiny gold plated links. Add charms and this intrepid piece becomes a statement. Approximately 41.25" length, toggle closure. N155 **\$79**

b. Mocha Disk Necklace

Warm tones of brown mother-of-pearl mix with delicate hand-knotted thread. 35" length, hook closure. N602 **\$89**

c. Latte Earrings

Brown mother-of-pearl mix with delicate gold plated wire to create beautiful drops. 1.5" drop excluding ear wire. E601 **\$39**

d. Sloane Enamel Bangle

Hand-painted ivory enameled bangle is scalloped with our signature pattern and handset stones. Fabulous alone or layered. 2.5" inner diameter. Hinge closure. B134I **\$59**

e. Sloane Hoop Earrings

Hand-painted ivory enamel earrings with scalloped edges and handset stones. A perfect pair with the Sloane Enamel Bangle. Post. E118I **\$39**

f. Clover, Crystal and Horn Charm Pack (set of 3 charms)

Make a statement with this graphic set of iconic charms: Clear quartz drop, resin horn, and signature clover charm with a worn gold finish. Clover: 1.25" diameter. Crystal: 1.75" length. Horn: 2" length. C101 **\$49**

Each stone handset on hand-painted enamel



*charm pack worn with
the La Coco Necklace*



f



{ She's wearing... }

- Delicate Drop Earrings
(for all, see page 20 and 21)
- Audrey Cluster Necklace
- Bridgette Bauble Necklace
- Audrey Cluster Bracelet
- Soirée Pearl Pave Bracelet
(champagne, see page 24)



Inspired by a vintage clip-on earring found at a flea market. This intricate floral detail can be worn on the back or side.



Vintage Luxe

EVERYDAY VINTAGE COUTURE

Charlotte Necklace

Multi strand silhouette puts a twist on our beloved hand-knotted pearls with chains and faceted champagne beads. The vintage-inspired flower clasp with faux pearl center makes for a beautiful accent. Approximately 19.5" shortest strand to 24" longest strand. Fold over clasp. N132 \$128



Inspired by Coco Chanel's philosophy to combine classic elements with bold accessories.



a. Audrey Cluster Necklace

This vintage-inspired textured chain drips with personality and baubles—faceted glass champagne stones with brown and ivory faux pearls. Truly versatile - wear it long, doubled, or add a brooch. Approximately 39" length with 2" extender. Lobster clasp closure. **N138 \$98**

b. Audrey Cluster Bracelet

Move and be moved. This statement bracelet moves with rich hues of ivory, brown, and champagne with classic faux pearls and faceted stones. Adjustable fit. Approximately 7.25" with a 1" extender. Lobster clasp closure. **B122 \$69**

c. Delicate Drop Earrings

Add facets to your style with stone drops dangling daintily from a pave petal on a gold vermeil round-shaped wire, .75" drop excluding ear wire. **E111G \$24**





{ She's wearing... }

- Audrey Cluster Necklace
- Bridgette Bauble Necklace
- Delicate Drop Earrings

d. Bridgette Bauble Necklace

Glass drops with intricate facets dangle on a vintage-textured chain. Wear alone or pair with the Audrey Cluster Necklace. Approximately 38" length with 2" extender. Lobster clasp closure.

N169G **\$69**

e. Charlotte Pearl Ring

Textured petals and pearly center make an exquisite gesture. Adjustable band fits ring sizes 5-9.

R106G **\$39**



{ She's wearing... }

- Charlotte Necklace
- Ladybug Studs (see page 24)

a

a. Charlotte Necklace

Multi strand silhouette puts a twist on our beloved hand-knotted pearls with chains and faceted champagne beads. The vintage-inspired flower clasp with faux pearl center makes for a beautiful accent. Approximately 19.5" shortest strand to 24" longest strand. Fold over clasp.

N132 \$128



b. Charlotte Charm Necklace

Textured chain with handset pave ball, faux pearl with a pave petal cap, and flower with textured petals and faux pearl center to wear together or individually. Approximately 18" length with 1" extender. Lobster clasp closure. N170G **\$49**

c. Bloom Charm Bracelet

Gold plated charm bracelet with an ivory enamel flower charm adorned with Czech crystals. 7.75" length. Charm, .75". Toggle closure. B903G **\$39**

d. Belle Fleur Ring - Gold

A statement flower ring that sparkles with handset pave petals and a faceted crystal center. Adjustable band fits ring sizes 5-9. R105G **\$49**



c



e. Vintage Cluster Ring

Handset faux pearls and crystals make style effortless. Adjustable band fits ring sizes 5-9. R104G **\$39**

Belle Fleur Earrings

Statement flower earrings sparkle with handset pave petals and a faceted glass stone center. You must see these on. Approximately .75" diameter.

f. Post E115G **\$39**

g. Clip-On E115GCL **\$39**

h. Charlotte Pearl Ring

Textured petals and pearly center make an exquisite gesture. Adjustable band fits ring sizes 5-9. R106G **\$39**



a



b

{ She's wearing... }

- Chloe Necklace
- Anastasia Brooch
- Audrey Cluster Bracelet (see page 20)
- Delicate Drop Earrings (see page 20)

a. Chloe Necklace

Faceted beads hand-knotted on a feminine ribbon make this look the ultimate in versatility. Wear it long or short. Approximately 17.5" beads and 18" of silk ribbon each side. Self-tie. **N163 \$49**

b. Anastasia Brooch

100% silk ribbon dip-dyed in rich cashmere hues with gold plated center adorned with CZs. **BR108M \$59**

Soirée Pearl Pave Bracelet

Shimmering glass pearls with a handset Czech crystal bauble. Stretchable bracelet adjusts to fit with a 2.5" inner diameter.

c. Brown

B817BR \$29

d. Champagne

B817C \$29

e. Vintage Twist Bracelet - Gold

Alternating gold and hematite plating combine with handset stones, spiraling around your wrist for easy, everyday sparkle. Stretchable bracelet adjusts to fit with a 2.5" inner diameter. Fits medium to large wrists. (Also available in silver, see page 7). **B121G \$39**

f. Sofia Cluster Ring - Smoky

Rich cashmere hues in freshwater pearls and smoky glass beads. 1.25" cluster. Adjustable brass band fits ring sizes 5-9. (Available in black, page 36). **R1001SM \$39**

g. Ladybug Studs

A spot of whimsy, our handset pave ladybug studs use one of our favorite motifs for starting conversations, .38" with post. **E112G \$24**



c

d

e

f

g

As seen in Us Weekly







{ She's wearing... }

- Sofia Pearl Bib Necklace
- Anastasia Brooch (see page 24)
- Vintage Cluster Ring (see page 23)

a. Grace Pearl Bauble Bracelet

Over 100 champagne and ivory faux pearls create a shimmering classic. 7.125" length. Fold over gold plated clasp with signature heart.

B1000I **\$89**

b. Grace Pearl Earrings - Ivory

The go with everything classic. Ivory freshwater pearls dangle from gold vermeil rings. 1" drop (Available in grey and sterling silver, page 13).

E1002I **\$29**

c. Sofia Cluster Ring - Smoky

Rich cashmere hues in freshwater pearls and smoky glass beads. 1.25" cluster. Adjustable brass band fits ring sizes 5-9. (Available in black, page 36).

R1001SM **\$39**

d. Sofia Pearl Bib Necklace

Hundreds of champagne and ivory faux pearls create a stunning statement. 17.5" Shortest strand to 19.5" longest strand with 2" extender. Lobster clasp closure (Anastasia Brooch sold separately, see page 24).

N1016I **\$118**





{ She's wearing... }

- Stella Vintage Link Necklace
- Ladybug Studs (see page 24 for details)



a. Stella Vintage Link Necklace

Boldly graphic and sophisticated, on-trend collar chain links together any look. Vintage-finished gold plating makes this necklace worth its style weight in gold. Approximately 18" length with 2" extender. Lobster clasp closure.

N136G **\$89**

b. Stella Vintage Link Bracelet

Dramatic links of vintage-finished gold plating have our signature heart stamped on the clasp. 7.5" length, end-to-end with fold over clasp. Fits small to medium wrists.

B110G **\$79**

c. Owl Charm Necklace

Wise, wonderful, whimsical. Our vintage owl pendant on gold plated link chain is for the woman with a playful style. Approximately 18" length with 1" extender. Lobster clasp closure.

N137 **\$44**

d. Pave Bee Necklace

Create a buzz with this charm favorite. A pave bee charm on a gold plated ball station chain adds a perfect touch of whimsy to any style. Approximately 17" length with 2" extender. Lobster clasp closure.

N168G **\$44**

e. Jolie Cocktail Ring

This vibrant semi-precious stone ring is a virtual piece of pop art. Make a statement with this beautiful array of blue, red, green and gold. New internal ring sizer means it fits any finger and any look.

R107M **\$79**



→
Shown with the
La Coco Necklace.
(see page 44)

f

g

h

i

Maltese Cuff

Make a statement with this chic variation of the Maltese cross on a bold resin cuff. This cuff is practically an outfit by itself. 2.25" inner diameter, 2.125" width on wrist. Hinge closure with magnet. Fits small to medium wrists.

- f. Ivory B129I **\$98**
- g. Black B129BK **\$98**

Maltese Brooch

Faceted stones add color and dimension to this Maltese cross-inspired brooch.

- h. Coral BR107C **\$44**
- i. Green BR107GR **\$44**

{ She's wearing... }

- The Metropolitan Mixed Chain Necklace
- Giltz Flower CZ Earrings (see page 41)
- Vintage Twist Bracelet (silver, see page 7)

Metropolitan Mixed Chain Necklace

An unexpected menagerie of street chic chains accented with 4 unique vintage brooches that mix CZ, glass beads, mixed metals and faceted stones. Take your look from day to evening couture instantly. Approximately 18.25" length with 2" extender. Toggle closure.

N161 \$198





← Combines four intricate vintage brooches and multiple plating techniques in the varying chains.

Day to Night

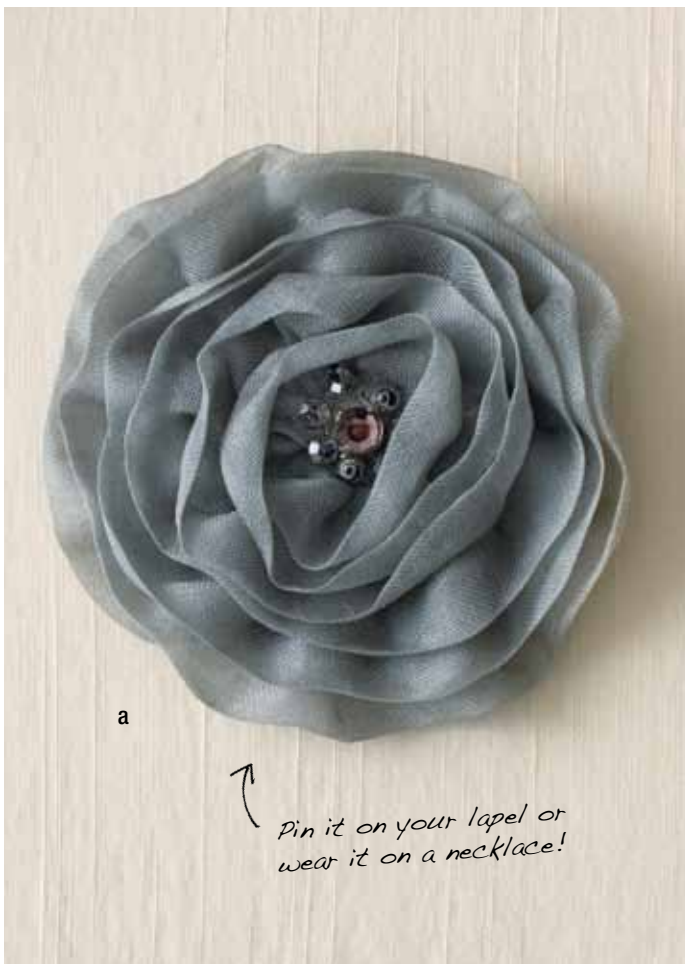
ROUND-THE-CLOCK GLAMOUR



↘ Inspired by mixed media chain trend, each crystal is braided with chain.







{ She's wearing... }

- Claire Necklace
- Sasha Flower Brooch
- Soirée Earrings - Silver (see page 9)
- Belle Fleur Ring - Hematite (see page 7)

a. Sasha Flower Brooch

Beautiful silk organza flower with glass and Czech stone accents. Pin on your lapel or necklace. Approximately 3" diameter, pin. BR1000S **\$34**

b. Claire Necklace

Faceted beads hand-knotted on a feminine grosgrain ribbon make this look the ultimate in versatility. Wear it long or short, dressed up or down, at home or out. Approximately 18" beads and 18" of silk ribbon each side. Self-tie. N130 **\$49**

c. Deco Drop Earrings

Vintage-inspired, faceted CZ and Czech crystal center drop earrings accented with sterling silver. These style stunners work as well at the office as at the opera. .5" drop excluding ear wire. E113S **\$39**

d. Stackable Deco Rings (sold in set of 3)

Luxe silver plated rings adorned with sparkling CZs. Sizes 5-9. R805S5-R805S9 **\$49**





{ She's wearing... }

- Petra Fringe Earrings
- Petra Braided Bracelet

a. Petra Braided Bracelet

Silver plated chains are braided together with the sparkle of crystal on antiqued plating. Approximately 7" length, 3 ring extender. Lobster clasp closure. **B120 \$98**

b. Petra Fringe Earrings

A collage of silver plated fringe with crystal for a flash of sparkle. Edgy or chic— this look works hard and plays hard. Approximately 3.125" length. Post. **E114S \$59**

c. La Coco Cupchain Necklace 

This faceted cupchain necklace combines crystal and mixed silver and gold plated chains for a versatile, street chic look. An accent of blue thread is handwoven into the chain. Approximately 24.75" length. Lobster clasp closure. **N167S \$69**

* see page 42 for details



{ She's wearing... }

- Perfect Faceted Earrings
- Rachel Necklace

a. Grace Pearl Earrings - Grey

The go with everything classic. Grey freshwater pearls dangle from sterling silver rings. 1" drop. Color may vary *(Available in ivory and gold, page 27)*.

E1002GR **\$29**

b. Perfect Faceted Earrings

A single perfect beauty in black onyx and sterling silver. 1.12" length.

E617BKS **\$39**

c. Sofia Cluster Ring - Black

Rich hues in faceted grey and jet black glass beads, 1.25" cluster. Adjustable brass band fits ring sizes 5 - 9 *(Available in smoky, page 24)*.

R1001BK **\$39**

d. Rachel Necklace

Versatility meets chic in this necklace of freshwater pearls, crystal quartz, glass beads and silver plated rings. 31" length. Includes grosgrain ribbon tie closure to wear as a double strand necklace.

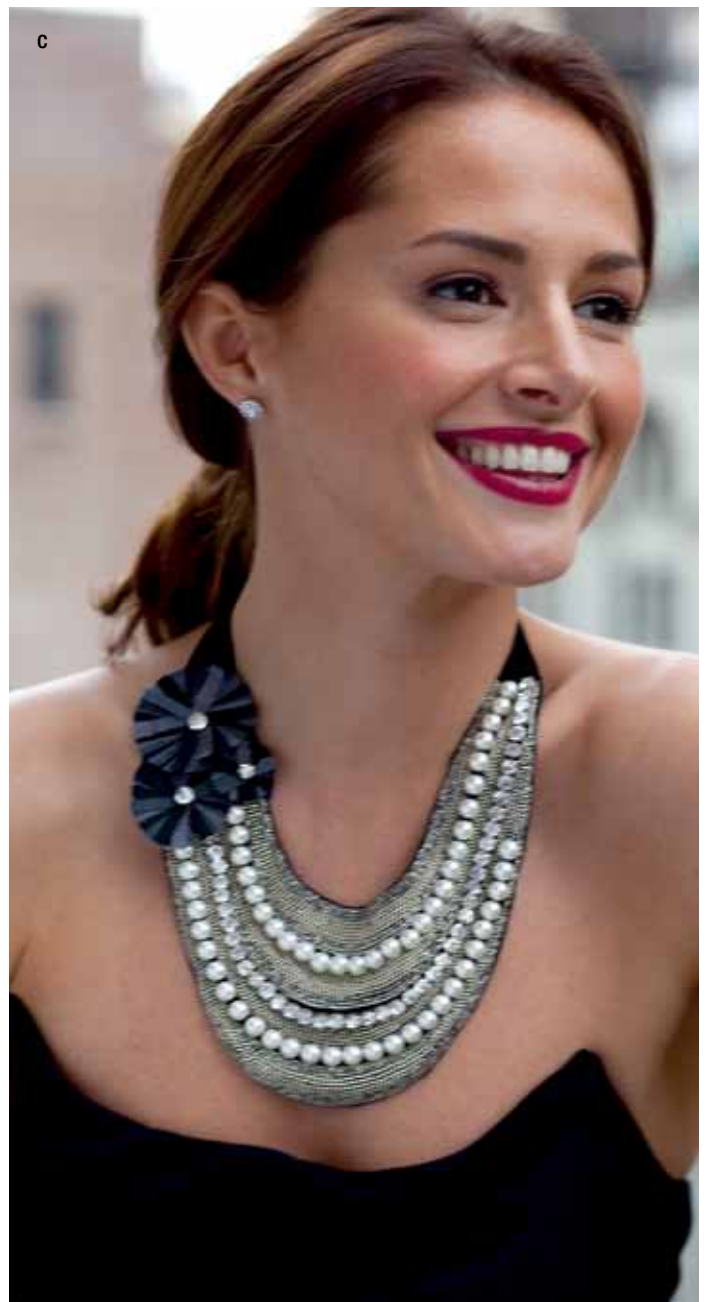
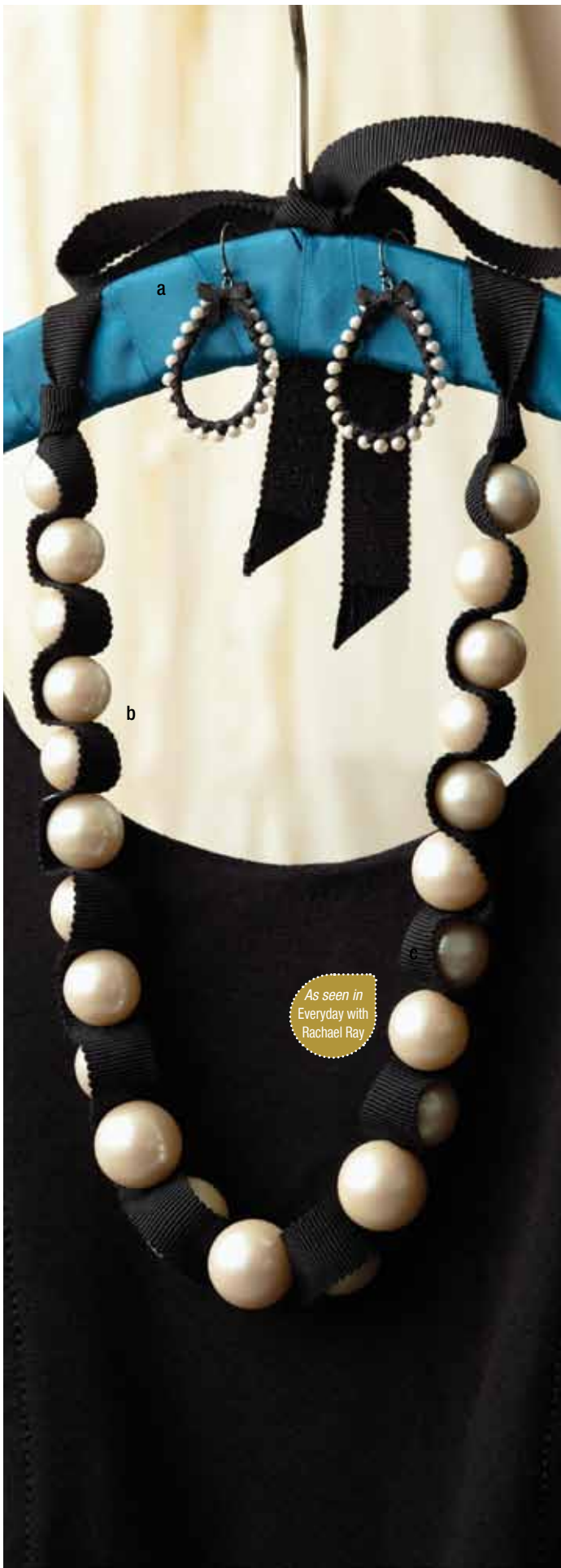
N1007S **\$89**

e. Geometric Stretch Bangle

This bold black resin bracelet is a must with our signature heart. Stretchable bracelet adjusts to fit with a 2.5" inner diameter.

B1003BK **\$39**





{ She's wearing... }

- Natasha Embroidered Bib Necklace
- Glint CZ Earrings (see page 40)

a. Jenna Teardrop Earrings

Lovely ivory faux pearls with ribbon make a stunning statement. Sterling silver ear wires. 1.5" length. **E1005BK \$34**

b. Jenna Pearl & Ribbon Necklace

Ivory faux pearls hand-knotted into grosgrain ribbon make a stunning statement. 15.5" of pearls, 16" of ribbon on each side, ribbon tie closure. **N1011BK \$44**

c. Natasha Embroidered Bib Necklace

Luxurious hand-embroidered bib with shimmering glass beads, faux pearls and Swarovski crystals. Silk rosettes and ribbon tie closure. 18.5" length ribbon on each side of necklace. 3.5" from top of bib to bottom. **N1017 \$198**



Actress Jennifer Love Hewitt

As seen in InStyle & People

{ She's wearing... }

- Natasha Embroidered Bib Necklace
- Ava Cupchain Earrings (see page 7)
- Belle Fleur Ring - Hematite (see page 7)



As seen in
US Weekly

Soirée Pearl Pave Bracelet

Shimmering glass pearls with a handset Czech crystal bauble. Stretchable bracelet adjusts to fit with a 2.5" inner diameter.

- a. Grey B817G \$29
- b. Ivory B817I \$29
- c. Black B817BK \$29

d. Heirloom Deco Bracelet

Czech crystals with silver plated accents, 7.75" length with fold-over clasp. B815S \$89

e. Ava Cupchain Necklace

7.75" of cut glass stones, 16" satin ribbon. N1019BK \$44

f. Baby Pave Hoop Earrings

Sterling silver with CZs. .50" inner diameter. E811S \$34
(Shown with dangle, sold seperately)

g. Freshwater Pearl Heart Dangle

Sterling silver and freshwater pearls. .75" drop *(set of 2)*. C833 \$19

h. Heirloom Earrings

Czech crystal, sterling silver ear wires. .75" length. E813S \$39

i. Glint Flower CZ Earrings

Sterling silver with CZs. .5" diameter. Post. E815S \$39

j. Glint Flower Necklace

Sterling silver with CZ flower. 17" length w/2" extender. N1022S \$39

k. Soirée Earrings

Handset Czech crystals adorn a delicate silver ball. Sterling silver ear wires, .50" drop. E1001S \$39

l. Stackable Deco Rings *(sold in set of 3)*

Luxe silver plated rings adorned with sparkling CZs. Sizes 5 – 9. R805S5-R805S9 \$49

m. Deco Drop Earrings

Vintage-inspired, faceted CZ and Czech crystal with sterling silver. .5" drop excluding ear wire. E113S \$39

n. Ava Cupchain Earrings

Brilliant glass stone in antiqued setting. E1012S \$22

o. Jill CZ Hoop Earrings

Silver plated hoops with CZs .1.5" inner diameter. Post. E810S \$69



As seen in
Lucky

As seen in
InStyle
Weddings



As seen in
Modern Bride



As seen in
Lucky





96 100



 **La Coco Style**
Look for this symbol on our necklaces that are made to mix and match with our brooches and clip-on charms.



the la coco concept

THE STYLE STATEMENT YOU CREATE

Nothing says you like La Coco. Inspired by Coco Chanel, who gave us both the Chanel suit and the little black dress, this collection is designed to transition effortlessly between both. Start with the basic chain. Add dimension with mix-and-match brooches, charms, and layering strands. Express yourself for any mood, look, or occasion.

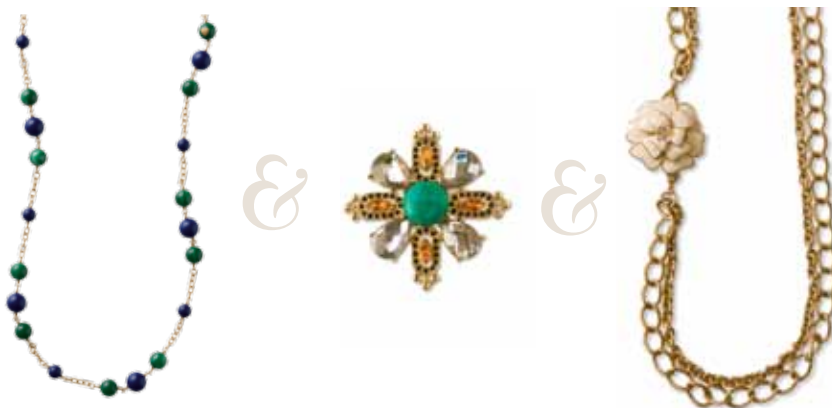
To maximize your style, swap out the base brooch with the a la carte brooches.



... N1004I \$98 BR104G \$49 N133G \$39



..... N167S \$69 N1004S \$98



..... N141BL \$44 BR107GR \$44 N1004I \$98



the bases

Start your La Coco Collection here.

La Coco Brooch and Necklace

This versatile look is actually 3-in-1. Unclip to create a bracelet, necklace and brooch. Lobster clasp closure. Necklace length 26", bracelet length 7.75".

- | | | |
|--|--------|------|
| a. Gold Plated with Ivory Enamel Flower Brooch | N1004I | \$98 |
| b. Silver Plated with Black Enamel Flower Brooch | N1004S | \$98 |



the base strands

Wear it doubled, tripled or with a brooch.

a. Pearl and Pave Rope Necklace

These glass pearls are hand-knotted on thread with rondelles. Perfect layered, doubled or tripled. Approximately 60" length. Lobster clasp closure.

N156I **\$69**

b. Jet Faceted Necklace

These jet black glass beads make a bold, classic statement. Hand-knotted on thread with faceted beads. Perfect layered, doubled or tripled. Approximately 60" length. Lobster clasp closure.

N157BK **\$69**



The add-ons

Wear it alone or add it on.

a. La Coco Rosary Strand

Semi precious dyed jade & resin beads in deep blue and green on a brass chain with our signature heart embedded into one of the beads. Approximately 28" length. Lobster clasp closure.

N141BL **\$44**

b. La Coco Silver Pearl Strand

Faux pearl and glass beads in steel grey and ivory with handset pave rondelles are striking hanging long or doubled up. Approximately 28" length. Lobster clasp closure.

N162S **\$39**

c. La Coco Cupchain Necklace

This faceted cupchain necklace combines crystal and mixed silver and gold plated chains for a versatile, street chic look. Approximately 24.75" length. Lobster clasp closure.

N167S **\$69**

d. La Coco Gold Pearl Strand

Rosary style glass pearls are accented with one sparkly pave ball. Gorgeous alone or paired with the La Coco Gold necklace. Approximately 28" length. Lobster clasp closure.

N133G **\$39**



Classic, Chanel-inspired costume brooch.

The brooches

Pin on your lapel or necklace.

a. Anastasia Brooch

100% silk ribbon dip-dyed in rich cashmere hues with gold plated center adorned with CZs. BR108M **\$59**

Vintage Starburst Brooch

Each crystal is handset, each prong hand closed. 1.75" diameter.

b. Vintage Starburst Brooch - Gold BR104G **\$49**

c. Vintage Starburst Brooch - Silver BR104S **\$49**

Maltese Brooch

Faceted stones add color and dimension to this Maltese cross inspired brooch.

d. Maltese Brooch - Coral BR107C **\$44**

e. Maltese Brooch - Green BR107GR **\$44**

f. Bee Brooch

Create a buzz with this whimsical brooch dotted with enamel. BR103 **\$39**

g. Starfish Brooch

A silver plated starfish is handset with pave stones and acrylic turquoise beads. BR102 **\$44**

h. Sasha Flower Brooch

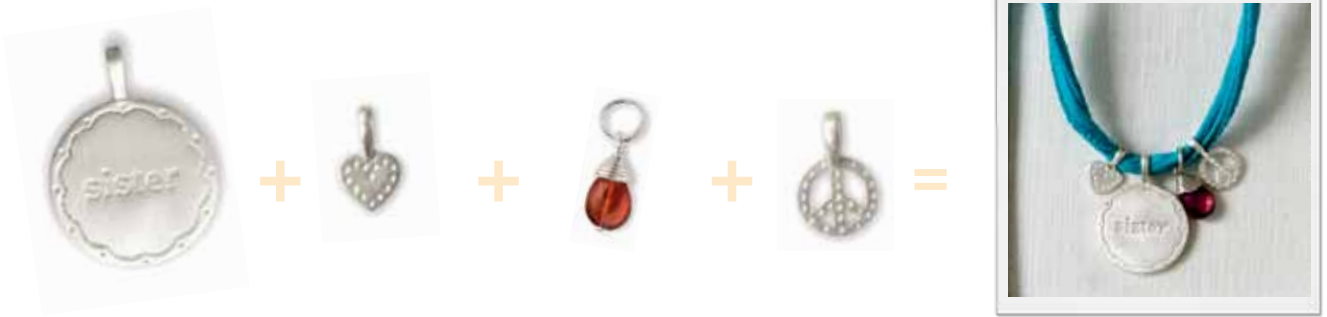
Silk organza flower with glass and Czech stone accents. Approximately 3" diameter, pin. BR1000S **\$34**



simply

CHARMING

Exceptionally personal, our charm collection gives you an everyday, every way piece that says so much about you. Choose a charm or multiple charms. Choose a base. Change it up. The charm collection makes a touching and meaningful gift that says everything a gift should. Give it to yourself, first.



32" aqua silk base

..... C819S \$34 C814S \$14 C803GS \$19 C903S \$14 N117AQ \$12



30" gold base chain

..... C823G \$39 C822G \$44 CBG \$34 C803CHG \$19 N801G \$54



18" silver base chain

..... C813S \$34 C814S \$14 C800FS \$24 N800S \$29



All charms are sterling silver or gold vermeil.

a. Love Script Charm

Silver C824S **\$34** Gold C824G **\$39**

Trinket Stones

b. Fluorite & sterling silver C800FS **\$24**
c. Lemon Quartz & gold vermeil C800LG **\$24**
d. Ruby & gold vermeil C800RG **\$24**

e. Pansy Charm

Silver C822S **\$39** Gold C822G **\$44**

f. Leaf Charm

Silver C823S **\$34** Gold C823G **\$39**

Mira Stone Studs

g. Fluorite & sterling silver E801FS **\$34**
h. Lemon quartz & gold vermeil E801LQG **\$39**
i. Ruby & gold vermeil E801RG **\$39**

Symbol charms

j. Heart
 Silver C814S **\$14** Gold C814G **\$14**

k. Wishbone
 Silver C815S **\$14** Gold C815G **\$14**

l. Cross
 Silver C817S **\$14** Gold C817G **\$14**

m. Star of David
 Silver C825S **\$14** Gold C825G **\$14**

n. Awareness
 Silver C816S **\$14** Gold C816G **\$14**

o. Signature Crown
 Silver C904S **\$24**

p. Signature Peace
 Silver C903S **\$14**

q. Pearl of Wisdom
 PP1 **\$11**





As seen in
Better Homes
and Gardens

r. Inspiration charms

- Faith**
Silver C811S **\$19** Gold C811G **\$24**
- Heal**
Silver C812S **\$19** Gold C812G **\$24**
- Hope**
Silver C809S **\$19** Gold C809G **\$24**
- Love**
Silver C810S **\$19** Gold C810G **\$24**

s. Initial charms

- Sterling silver** **\$29**
item # = CAS, CBS, ... CZS
- Gold vermeil** **\$34**
item # = CAG, CBG, ... CZG

t. Relationship charms

- Sterling silver** **\$34**
- Gold vermeil** **\$39**
- Mom** Silver C813S, gold C813G
- Sister** Silver C819S, gold C819G
- Grandma** Silver C821S, gold C821G

u. Birthstone briolettes

- Sterling silver, gold vermeil **\$19**
- Rose Quartz** : Breast Cancer Awareness
G C803RQG SS C803RQS
- Carnelian** : G C803CAG SS C803CAS
- Jan** : Garnet G C803GG SS C803GS
- Feb** : Amethyst G C803AMG SS C803AMS
- Mar** : Aquamarine G C803AAG SS C803AQS
- Apr** : Cubic Zirconia G C803CZG SS C803CZS
- May** : Chrysoprase G C803CHG SS C803CHS
- Jun** : Moonstone G C803MG SS C803MS
- Jul** : Ruby G C803RG SS C803RS
- Aug** : Peridot G C803PG SS C803PS
- Sep** : Blue Lapis G C803LG SS C803LS
- Oct** : Pink Quartz G C803TG SS C803TS
- Nov** : Citrine G C803CG SS C803CS
- Dec** : Turquoise G C803TUG SS C803TUS

Silk Bases

- v. Silk Base - Aqua** N117AQ **\$12**
- w. Silk Base - Pink** N117P **\$12**



As seen in
Everyday with
Rachael Ray

g

f

h

i

a

b

c

d

e

j

k

Personalize it

1. Mix and match your removable charms to create your custom piece.
2. Choose your base.

As seen in
O Magazine

{ She's wearing... }

- Hoopla Earrings (see page 60)
- Aqua Silk Base with Love Script Charm
- 18" Chain Base with Initial Charm and Birthstone Briolette

Chains

a. G Ball station chain 18"	N1024G	\$39
b. G chain 30"	N801G	\$54
c. SS chain 30"	N801S	\$49
d. G chain 18"	N800G	\$34
e. SS chain 18"	N800S	\$29
f. SS chain 15"	N848S	\$24

g. Signature Leather Necklace

Leather cord with sterling silver lobster clasp.		
18"	N922	\$14
15"	N923	\$12

Charm bangle

Delicate bangle to personalize as you please. 2.5" inner diameter.

h. Gold vermeil	B810G	\$49
i. Sterling silver	B810S	\$44

Bella Chameleon Hoop Earrings

j. Gold vermeil	E803G	\$39
k. Sterling silver	E803S	\$34



Our charm bangles are finished with signature details.



Maya Brenner
for Stella & Dot

Jewelry designer for the stars

Her designs have been coveted by style mavens such as **Madonna, Eva Longoria, Salma Hayek, Cameron Diaz,** and **Cindy Crawford,** just to name a few. Her jewelry is sold at **Fred Segal** and **Henri Bendel's** and has been featured on numerous TV shows. What does Maya like even better than dressing celebs? Dressing women everywhere with her Stella & Dot designs.

a. Love Script Necklace

Perfectly lovely sterling silver necklace. 16" length with 2" extender, lobster clasp. Pendant width, 1.5". **N900S \$44**

b. Ella Dove Necklace

Delicate sterling silver dove and chain with a chalcedony bauble. 16" length with 2" extender, lobster clasp. Dove width, .75". **N1020S \$39**

c. Sun Disc Earrings

Delicate precious metal hammered hoops accented with a tiny disc, 1.75" length.
Gold vermeil **E707V \$39**
Sterling silver **E707S \$34**

d. Teardrop Scroll Earrings

Teardrops pair with a delicate scroll. 1" length.
Gold vermeil **E143V \$29**
Sterling silver **E143S \$29**

e. Gold Leaf Earrings

Gold plated leaves with delicate chain, 1.5" length. gold vermeil ear wires. **E404 \$39**

f. Tiny Flower Necklace

Tiny golden disc with Czech stone flower, 17" gold plated chain. Disc diameter, .375". **N413 \$29**

g. Penelope Necklace

Gold vermeil chain, charms and medallion, 19.5" length. Lobster clasp closure. Pendant diameter, 1". **N149 \$69**

h. Together Forever Necklace

Intertwined gold vermeil and sterling silver circles, sterling silver chain and lobster clasp closure, 18" length with 2" extender. Gold circle diameter, 1". **N901GS \$39**

i. Jasmine Filigree Necklace

Delicately hand-crafted of precious metals. 18" length with 2" extender. Pendant diameter 1.5".
Gold vermeil **N802G \$64**
Sterling silver **N802S \$64**

j. Charmed Life Necklace

Sterling silver charms and leaf with a CZ drop, 20" length. Leaf, 1" length. **N006 \$69**

k. Starfish Necklace

A sterling silver stunner includes a sandollar, starfish and fresh-water pearl charm. 17.75" length. **N158 \$69**

l. Goa Pendant Necklace

A unique design of hand wire-wrapped turquoise with yellow quartz drop. Gold plated chain, 17" length with 2.5" extender. Pendant length, 2.25". **N603 \$49**

m. Teardrop Necklace

Sterling silver, 17" length. Drop .5" length. **N143 \$34**

Celebrity Sightings: styles the stars love



Penelope Cruz in the Penelope Necklace



Carrie Ann Inaba with the Charmed Life Necklace



Elisha Cuthbert in the Goa Necklace



As seen in Cosmo

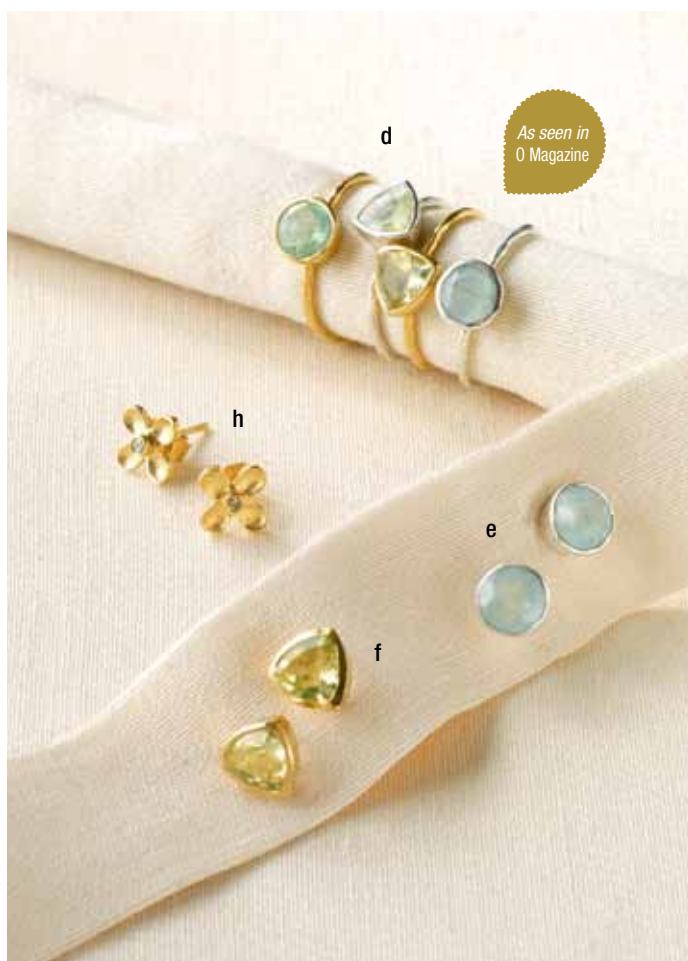
As seen in Life & Style

As seen in US Magazine



As seen in Redbook

As seen in Teen Vogue



As seen in O Magazine

a. Baby Flower Bangle

Dainty hand-hammered gold plated bangle with delicate flowers and handset CZs. Simply sweet alone, even better layered. Approximately 2.5" inner diameter. Fits medium to small wrists. B100G **\$39**

b. Devi Bangles (Set of 3)

Three gold or silver plated bangles with sparkling CZs. Approximately 2.5" inner diameter. Fits medium to small wrists. Gold plated B801G/3 **\$79**
Silver plated (see page 59) B801S/3 **\$79**

c. Mira Bangles (Set of 3)

Three hand-hammered gold plated bangles, one with accents of reconstituted turquoise stones. Approximately 2.5" inner diameter. Fits small to medium wrists. Gold plated B104G **\$59**
Silver plated (see page 59) B104S **\$49**

d. Jasmine Stackable Stone Rings

Handcut stones, precious metal. Size 5-9.
Triangle prehnite & sterling silver R801PS5 – R801PS9 **\$34**
Triangle lemon quartz & gold vermeil R800LG5-R800LG9 **\$39**
Round fluorite & sterling silver R801FS5 – R801FS9 **\$34**
Round fluorite & gold vermeil R800FG5-R800FG9 **\$39**
Oval ruby & gold vermeil R800RG5 – R800RG9 **\$39**

Mira Stone Stud Earrings

Handcut stones glimmer with facets in a hand-pressed bezel of precious metal.
e. Fluorite & sterling silver E801FS **\$34**
f. Lemon quartz & gold vermeil E801LQG **\$39**
g. Ruby & gold vermeil E801RG **\$39**

h. Baby Flower Post Earrings

Simply adorable tiny handset CZs in gold vermeil. Post. E109G **\$24**



i. Devi CZ Hoop Earrings

Precious metals surround sparkling CZs. 1.75" inner diameter.

Gold vermeil	E802G	\$64
Sterling silver (shown on page 59)	E802S	\$59

j. Aimee Locket Necklace

Gold plated, functioning locket clips on the easy-to-double chain with filagree, tiger-eye and gems. 32" length, lobster clasp. Locket, 1.25".

N817 **\$79**

k. Mimi Necklace

Beautiful gold plated oval links and chain decorated with quartz nuggets. 34" length.

N821 **\$59**

l. Perfect Faceted Earrings

A single perfect handcut smoky quartz drop with gold vermeil rings and ear wires. 1.12" length.

E617SG **\$39**

m. Gabrielle Citrine Necklace

5 strands of intricate chain mingle with hand-wrapped citrine stones. Gold plated. 23.75" shortest, 28.5" longest length, lobster clasp.

N820 **\$89**



Actress Viola Davis



a

b

Try doubling for a shorter look.

Signature Details

It's all about the details – engraved dot, scroll, and flower patterns – it's oh so Stella & Dot.

a. Signature Dot Disc Necklace

Our signature dot and flower pattern alternating on sterling silver discs. It's Stella & Dot on a delicate sterling silver chain. Perfect as a long, layering piece or can be doubled for a shorter look. 36" length, hook closure.

N102S **\$89**

b. Fringe Hoop Earrings

We've updated your go-to hoops with fluttering silver plated discs. Very lightweight and every day. 1.75" inner diameter. Post closure.

E104S **\$34**



As seen in Teen Vogue

c. Mira Bangles (Set of 3)

Three hand-hammered silver plated bangles, one with accents of reconstituted turquoise stones. Approximately 2.5" inner diameter. Fits small to medium wrist.
Silver plated B104S \$49
Gold plated (see page 56) B104G \$59

d. Devi Bangles (Set of 3)

Gold or silver plated bangles with CZs. Approximately 2.5" inner diameter.
Gold plated (see page 56) B801G/3 \$79
Silver plated B801S/3 \$79

e. Signature Clover Bangles

Hand-hammered silver plated brass bangle punctuated with our signature clover motif. Lucky alone, even luckier layered. Approximately 2.5" inner diameter. Fits small to medium wrist. B106S \$29

f. Signature Clover Cuff

Wear your luck on your sleeve with this silver plated bangle in our signature clover motif. 2" inner diameter, width on wrist approximately 2.25". Fits small to medium wrist. B107S \$64

g. Signature Clover Chandelier Earrings

Lady luck smiles on you in style with these dramatic silver plated earrings featuring our signature clover motif. Sterling silver ear wires. 2.18" drop, excluding ear wires. E106S \$49

h. Devi CZ Hoop Earrings

Precious metals surround sparkling CZs. 1.75" inner diameter.
Gold vermeil (see page 56) E802G \$64
Sterling silver E802S \$59



a. Josephine Pearl Lariat

A chic braid of silver plated chains culminate in freshwater pearls, each unique. Wear multiple ways - long, short or wrapped twice. Approximately 42.5" length. **N110S \$98**

b. Josephine Cascade Earrings

Three freshwater pearls, each unique, swing from silver plated chains. Approximately 3" length. Sterling silver ear wires. **E101S \$39**

c. Hoopla Dot Hoop Earrings

These delicate sterling silver hoops with our signature dot pattern just for us. 1.625" diameter. **E1000S \$39**

d. Lucky Seven Rings (set of 7)

Sterling silver with signature detail. When worn together, rings measure 5/8" width on finger. Sizes 5-9. **R1000S/75 - R1000S/79 \$54**

e. Cascading Chain Necklace

Long layers of silver plated chains finished off with chic braiding on each side. Approximately 34" shortest strand to 43" longest strand with 2" extender. **N123S \$69**

f. Threaded Coin Pearl Necklace

Freshwater pearls dance on hand-knotted silk thread. Approximately 38" length, sterling silver hook closure. **N1005 \$59**

g. Coin Pearl Earrings

Freshwater pearls with sterling silver ear wires, 2" length. **E1004 \$24**



*American Idol Judge
Kara DioGuardi*



Inspired by a vintage coin we found in a market, it took us countless revisions to get it just so.

a. Riviera Coin Necklace

A stylish mix of silver plated vintage coins and cool aqua chalcedony with labradorite stones on a silver plated chain. 17 – 19” length with 2” extender. Hook closure.

N100M \$79

b. Riviera Pendant Necklace

A tiny gold plated flower with labradorite stone and CZ drop against a silver plated vintage coin. On spaced ball and station chain in sterling silver. 17” length with 2” extender. Hook closure.

N106S \$59

c. Riviera Coin Earrings

Labradorite stone dangles with a silver plated vintage coin. Sterling silver ear wire, 1.25” length, excluding wire.

E108S \$34

d. Cross Stamp Necklace

An antique cross stamped into sterling silver. 20” w/2” extender, lobster clasp.

MN905 \$79

e. Tulum Turquoise Coin Necklace

Silver plated coin dangles from seed beads and amazing turquoise beads, hand-sorted and selected for variation. Adjustable hand-knotted silk thread to keep your length options open. Adjustable pull closure. 25.5 ” extended length.

N108S \$69



d
A vintage intaglio
(Italian wax seal)
stamped into
sterling silver.

e
All-natural turquoise,
hand-selected for
color variation.



f
Wrap four times and wear as a bracelet
or a single strand necklace.



f. Costa Azul Wrap Bracelet

Gradients of turquoise, aventurine, and lemon jasper, hand-wrapped on leather. Button and loop closure. 27.25" to first knot, 30.5" end-to-end. Fits small to large wrists. B114TU \$59

g. Tulum Turquoise & Leather Bracelet

Turquoise hand-wrapped onto leather cord. 6" from button to first knot. 8.5" total length. Button and loop closure. Fits small to large wrists. B112S \$54

h. Signature Scallop & Leather Bracelet

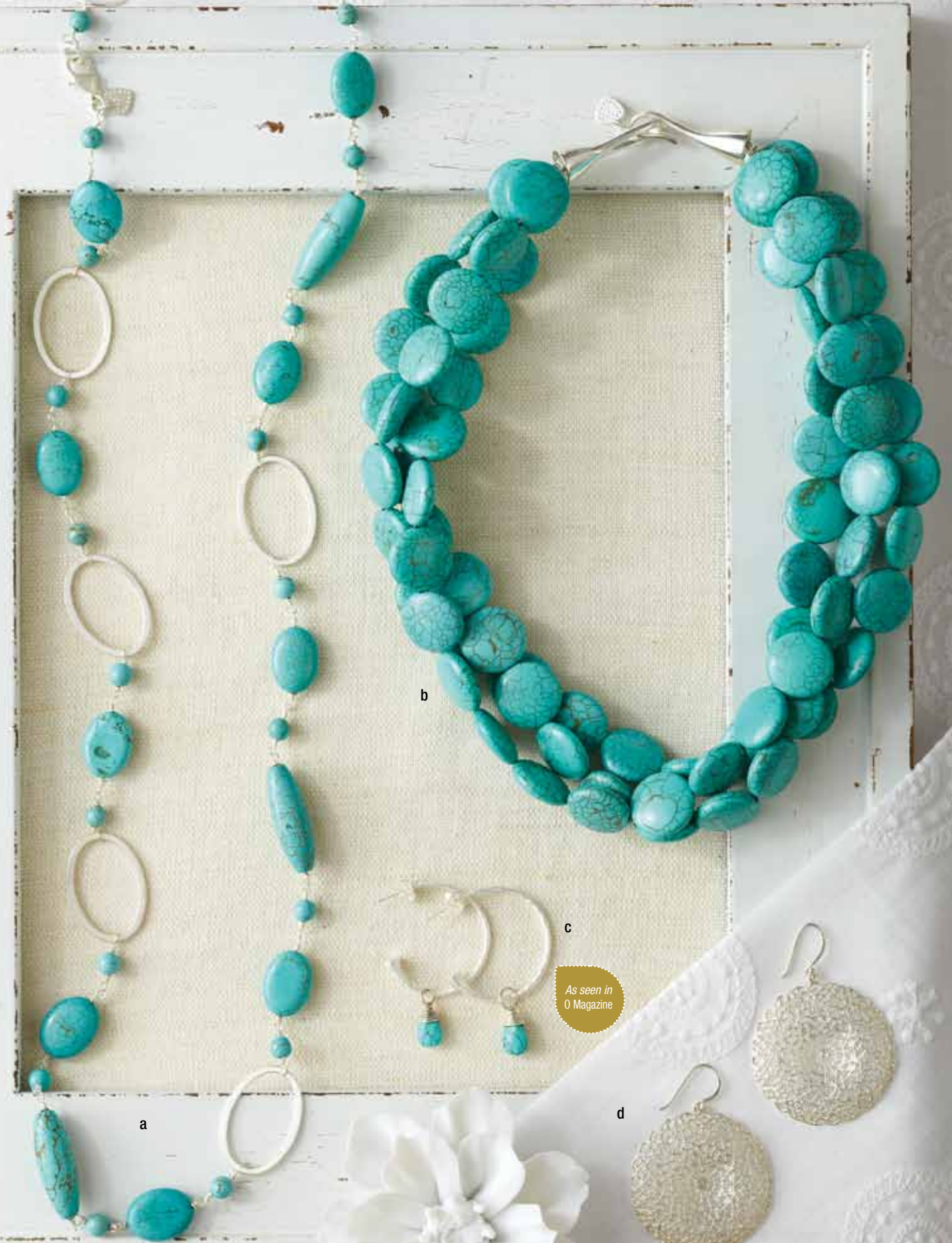
Silver plated signature scalloped beads hand-wrapped onto leather cord. Signature flower button and loop closure. 6" from button to first knot, 8.5" total length. Fits small to large wrists. B108S \$34

i. Pearl & Leather Bracelet

Glass pearls and silver plated nuggets hand-wrapped onto leather cord. Unexpectedly fabulous and great to layer. Signature flower button and loop closure. 6" from button to first knot, 8.5" total length. Fits small to large wrists. B105S \$34

j. Stretch Medallion Bracelet

Warm wood with an ornate filigree medallion, dotted with green and blue enamel discs. 1.75" width on wrist, 2.5" inner diameter. Fits small to medium wrists. B115 \$59



b

c

As seen in
O Magazine

a

d

a. Piper Turquoise Link Necklace

Beautiful turquoise is hand-wrapped to oval silver plated links. Versatile length to wear long or wrap for shorter look. Approximately 39", lobster clasp.

N1008TU **\$69**

b. Turquoise Sea Necklace

3 luxurious strands of turquoise with sterling silver clasp. 19.5" length.

N625 **\$168**

c. Bella Chameleon Hoop Earrings

These delicate sterling silver hoops are everyday musts. Mix it up by sliding on stones in your choice of colors. Shown with our turquoise briolette charms, sold separately (See page 53). 1.25" inner diameter.

E803S **\$34**

d. Jasmine Filigree Earrings

Delicately hand-crafted of precious metals. Pendant diameter 1.5". (See page 55 for necklace).

Gold vermeil (See page 82)

E800G **\$59**

Sterling silver

E800S **\$59**

e. Cortez Turquoise & Suede Necklace

Sea-hued turquoise, earthy suede, wood rings, and waxed cord. Hello, little white dress. Adjustable tie – stones portion of necklace approximately 12.5", suede approximately 17" each side.

N113 **\$98**

f. Turquoise Sea Drop Earrings

Turquoise drops dangle from sterling silver wires. 2" length.

E808 **\$29**



**Turquoise is a universally flattering color, you'll look smashing in these turquoise pieces.*

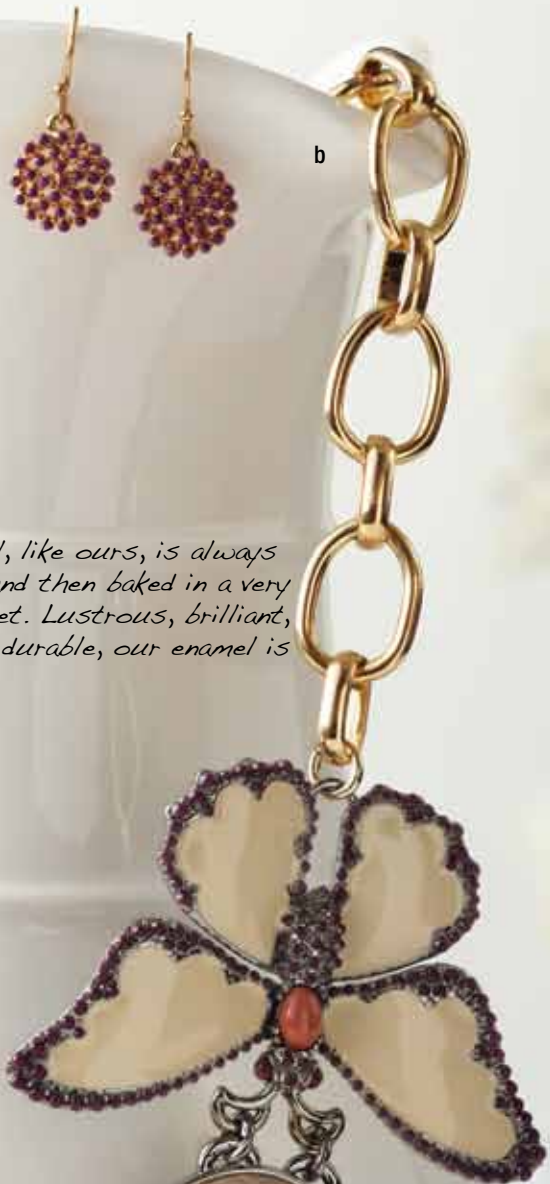




* *Quality enamel, like ours, is always hand-painted and then baked in a very hot oven to set. Lustrous, brilliant, and extremely durable, our enamel is made to last.*



a



b

As seen in
Star
& Cosmo

a. Garden Party Necklace

Inspired by vintage brooches in berry, ivory and coral. This artful treasure is made with hand-painted enamel. Gold plated chain, 20" length with 3" extender. Lobster clasp closure. N1013 **\$248**

b. Garden Party Dot Earrings

Berry hand-painted enamel dots adorn a delicate gold disc. Gold vermeil ear wires. .5" drop. E1008B **\$29**



c. Bloom Charm Bracelet

Gold plated charm bracelet with an ivory hand-painted flower charm adorned with Czech crystals. 7.75" length. Charm, .75". **B903G \$39**

d. Bee Charm Collection – Set of 3

Hand-painted enamel black and red flowers, and pave bee. Get creative - clip 1, 2 or 3 onto chain necklaces or bracelets. Spring ring closure. Red flower .75", black flower .75". **C1000 \$49**

e. Palm Beach Charm Collection – Set of 3

Stylish charms with a touch of whimsy. Aqua enamel flower, gold plated hornet with enamel dots, coral dangle with Czech stones and gold plated rondelles. Spring ring closure. Hornet 1.25", blue flower 1", coral dangle .75". **C100G \$49**

f. Ladybug Studs

A spot of whimsy, our handset pave ladybug studs use one of our favorite motifs for starting conversations, .38" with post. **E112G \$24**

g. Pave Bee Necklace

Create a buzz with this charm favorite. A pave bee charm on a gold plated ball station chain adds a perfect touch of whimsy to any style. Approximately 17" length with 2" extender. Lobster clasp closure. **N168G \$44**

h. Owl Charm Necklace

Wise, wonderful, whimsical. Our vintage owl pendant on gold plated link chain is for the woman with a playful style. Approximately 18" length with 1" extender. Lobster clasp closure. **N137 \$44**

i. Colorburst Enamel Cuff

Bold cuff in luxurious hand-painted enamel, gold plated. Turquoise & ivory **B629GT \$128**

As seen in Better Homes and Gardens



a

Each bead has a handset pave rondelle for extra sparkle.



b

c

d

e

a. Boca Chic Necklace

Semi-precious dyed jade mixed with handset pave rondelles. Gold plated chain, length 39". N112 \$69

Summer Soirée Bracelet

Striking dyed jade or turquoise bead punctuates warm wood beads with Czech stone accents on rondelles. Stretchable bracelet adjusts to fit with a 2.5" inner diameter. Fits small to medium wrists.

b. Turquoise

B113TU \$29

c. Coral

B113C \$29

Soirée Bracelet

Coral or Turquoise beads sparkle with the glint of a single handset Czech crystal bauble. Stretchable bracelet adjusts to fit with a 2.5" inner diameter. Fits a small to medium wrists.

d. Turquoise

B900TU \$29

e. Coral

B900C \$29



Bachelorette, Jillian Harris wearing the Charlyze Earrings



f. Charlize Bib Necklace *(Shown on model)*

Make a stunning statement in hand-painted turquoise enamel with center stone. Gold plated accents. 18.5" length with 2" extender, lobster clasp closure.

N903TU **\$79**

g. Charlize Teardrop Earrings

Make a stunning statement in hand-painted turquoise enamel with center stone. Gold plated accents, gold vermeil ear wires, 1.5" length.

E900TU **\$34**



h. Charlize Wood Necklace

Warm wood, hand-knotted silk thread and hand-painted turquoise enamel with center stone. Gold plated accents. 23" length, box and tongue clasp finished with a tiny signature heart. Large wood bead diameter, .75".

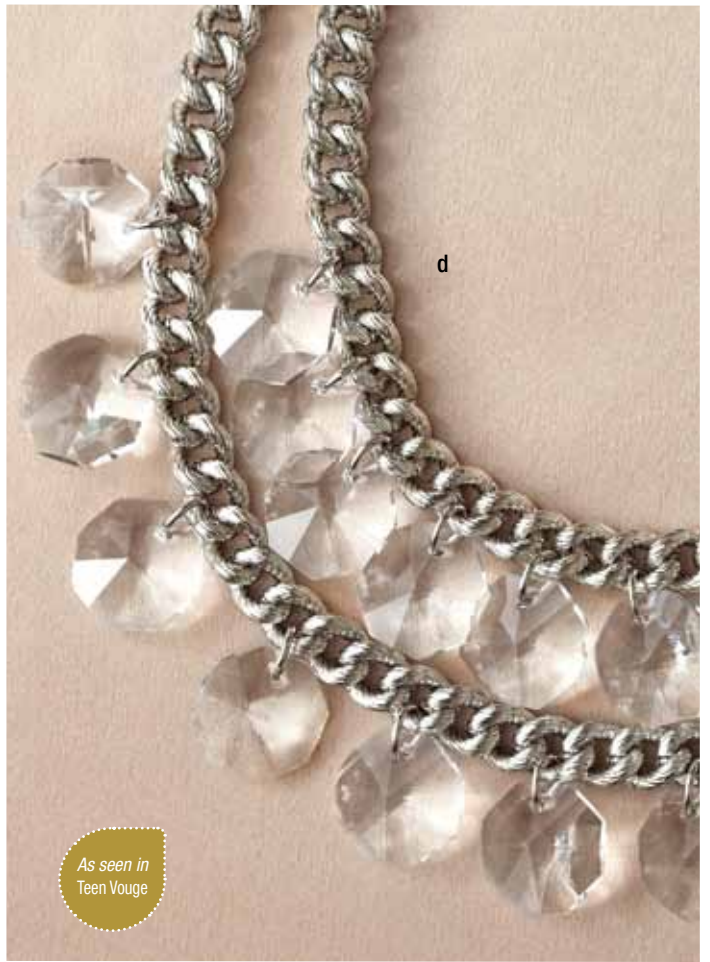
N915TU **\$59**



a

b

c



As seen in Teen Vogue

{ She's wearing... }

- Byblos Crystal Chandelier Necklace
- Soirée Earrings - Silver (see page 9)

a. Gilda Hoop Earrings

Delicate hand-burnished precious metal links. 2.25" length.

Gold vermeil (see page 82)

E485 **\$59**

Sterling silver

E485S **\$55**

b. Gilda Links Earrings

Delicate precious metal links. You'll be wearing these for years. 2.25" length.

Gold vermeil (see page 82)

E488V **\$49**

Sterling silver

E488S **\$39**

c. Gilda Necklace

A bold look with dramatic sterling silver textured finish. 24" length, spring ring closure.

N485S **\$148**

d. Byblos Crystal Chandelier Necklace

A sophisticated look that goes with everything. Silver plated vintage textured chain with hand cut glass chandelier stones. 17" length with 2" extender.

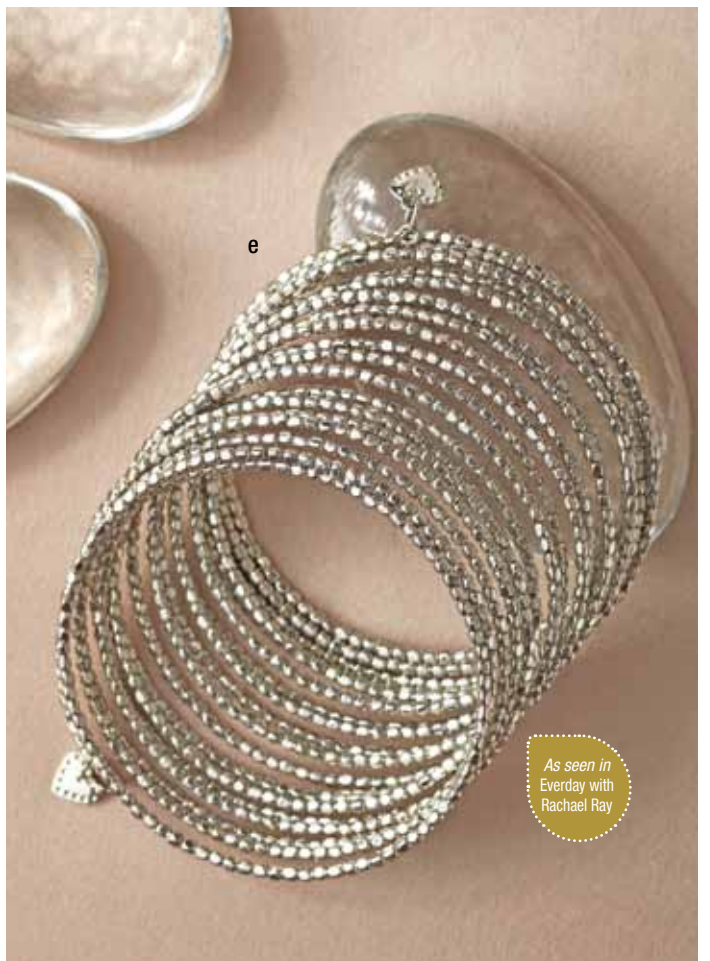
Shortest strand 15.5" length. Lobster clasp closure.

N115 **\$168**

e. Bardot Spiral Bangle

A metallic coil of silver with the look of stacked bangles. Finished off with our tiny signature heart. Approximately 2.5" inner diameter. Fits small to large wrists.

B101S **\$89**



As seen in Everyday with Rachael Ray

little girls

Style comes out to play





{ Mom's wearing... }

{ Daughter's wearing... }

- La Coco Necklace in Gold with add-on Gold Pearl Strand and Gold Vintage Starburst Brooch
(see page 44 & 46)

- Mini Charlotte Necklace
- Mini Soirée Bracelet in Ivory
(see page 75)

- Grace Pearl Earrings in Ivory *(see page 27)*

a. Mini Charlotte Necklace

Simply precious. Vintage-textured gold plated chain paired with faux pearls hand-knotted on silk thread. The vintage-inspired flower clasp with faux pearl center makes for a beautiful accent. 21.5" shortest strand to 22.5" longest strand. Lobster clasp closure.

N148G **\$34**

b. Mini Bloom Flower Ring

This ivory enamel ring around-the-rosie is accented with a tiny sparkly flower. Adjustable silver plated brass band. Flower, .75".

R103I **\$14**

c. Mini Soirée Necklace

She'll adore these faux pearls accented by a sparkly pave ball. Stretch elastic. Length, approximately, 13".

N124 **\$24**





{ She's wearing... }

- Lola Necklace
- Mini Charlotte Necklace (see page 73)
- Lola Stretch Bracelets in Red and Blue
- Mini Soirée Bracelet in Ivory

a. Fiona Headband & Barrette

Stretch headband keeps her hair back in style with blue and green plaid fabric florets and acrylic stone flower center to make her the center of attention.

H102 \$24

b. Lola Stretch Bracelet

Precious faux pearl and playful plaid ribbon bracelet, accented with our silver plated signature heart. Stretch elastic. Approximately 1.75" inner diameter.

Red B125R \$14

Blue B125BL \$14

c. Mini Soirée Bracelet- Ivory

As chic as our grown-up version, these faux pearls and sparkly pave ball encircle little wrists in big style. Stretch elastic - Approximately 2" inner diameter. Available in Turquoise, Ivory & Coral. (See page 77)

B118I \$14

d. Fiona Ring

Every girl deserves a little sparkle. Faceted stones create a playful sparkly flower on an adjustable silver plated band.

R108 \$14

e. Lola Necklace

Lola is the star of the show in this statement necklace. Red and blue gingham plaid ribbon plays between faux pearls. Big ribbon florets with acrylic stone flower center. Tie closure is adjustable for length. 6.25" of faux pearls, 15" of ribbon on each side.

N147 \$29



Comes in a similar mommy style. See the Jenna Pearl and Ribbon Necklace on page 38.



Featured in
Daily Candy
Kids



Carson Palmer, one of our
facebook contest winners!





{ She's wearing... }

- Little Dottie Necklace
- Little Dottie Bracelet
- Mini Soirée in Turquoise

a. Mini Bloom Flower Ring

This ivory enamel ring around-the-rosie is accented with a tiny sparkly flower. Adjustable silver plated band. Flower, .75".

R103I **\$14**

b. Kristin Ring

This pink enamel ring around-the-rosie is accented with a sparkly ladybug. Adjustable silver plated band. Flower, .75".

R102P **\$14**

c. Little Dottie Necklace

Colorful acrylic beads, with a sparkly pave ball and daisy accent flower. Pretty blue ribbon tie closure, 10" of beads, with 15" of ribbon each side.

N129 **\$29**

d. Little Dottie Bracelet

Colorful acrylic beads are accented with a dangling daisy flower. Stretch elastic. Approximately 2" inner diameter.

B119 **\$14**

e. Mini Bloom Flower Necklace

Coral acrylic beads are accented with an adorable ivory enamel flower accented with a tiny sparkly flower. Stretch elastic. Length, 13".

N127 **\$26**

Mini Soirée Bracelets

As chic as our grown up version, she'll love the colorful acrylic beads and sparkly pave ball. Stretch elastic. Approximately 2" inner diameter.

f. Coral B118C **\$14**

g. Ivory B118I **\$14**

h. Turquoise B118TU **\$14**





a. Gracie Headband and Barrettes

So fancy chiffon flower barrettes with sparkly acrylic stone come with an elastic ribbon headband, 13" length. White flower barrette, approximately 3" diameter. Pink flower barrette, approximately 2.5" diameter.

H100 \$24

b. Kristin Charm Necklace

Charmed, I'm sure. Comes with 3 charms to change as you please- pin enamel flower accented with a ladybug, white enamel flower and sparkly pave ball. Lobster clasp, silver plated chain 14" with 2" extender.

N126 \$24

c. Allie Pearl & Ribbon Necklace

Adorable faux pearl necklace interwoven with pink gingham ribbon. Fabric flower barrette is accented with acrylic stone. Tie closure. 7" of faux pearls, 15" ribbon each side. Flower barrette unclips from necklace, 1.5" diameter.

N125 \$29

d. Mini Soirée Necklace

She'll adore these faux pearls accented by a sparkly pave ball. Stretch elastic. Length, approximately. 13".

N124 \$24

e. Allie Pearl & Ribbon Bracelet

Cutie pie faux pearl and gingham ribbon bracelet, accented with our silver plated logo heart. Stretch elastic. Approximately 1.5" inner diameter.

B117 \$14

f. Mini Bloom Flower Ring

This ivory enamel ring around-the-rosie is accented with a tiny sparkly flower. Adjustable silver plated band. Flower, .75".

R103I \$14

g. Kristin Ring

This pink enamel ring around-the-rosie is accented with a tiny sparkly ladybug. Adjustable silver plated band. Flower, .75".

R102P \$14

h. Kristin Pearl Bracelet

The daintiest classic to wear around her wrist. Faux pearls with an enamel flower accented with a sparkly ladybug. Stretch elastic. Approximately 2" inner diameter.

B116 \$14

Doubles as a hair barrette from the Allie Pearl & Ribbon Necklace!



STYLE *thru* THE AGES

These versatile style stunners are certain to spice up your wardrobe at any age. From runway relevant twists on the classic pearls and mixed chains, there's a statement to be made by everyone.



1

THE STATEMENT PIECE THAT IS AS REFINED AS IT IS CHIC

THE CHARLOTTE NECKLACE: \$128



these earrings come as clip-ons or with posts!

2

LINKS AND CHAINS ADD EXTRA TO ANY LOOK

SADIE LINKS NECKLACE: \$79



an enamel cuff to finish any outfit

3

A SURPRISINGLY VERSATILE WOW, DAY OR NIGHT

METROPOLITAN MIXED CHAIN NECKLACE: \$198

blackened metal shows off a faceted stone center for a ring that's truly opulent



{ She's wearing... }

• Garden Party Chandelier Earrings

a. Jasmine Filigree Earrings

Delicately hand-crafted of precious metals. 1.5" length. Pendant diameter 1.5" (see page 54 for necklace).

Gold vermeil E800G \$59
Sterling silver (see page 65) E800S \$59

b. Signature Clover Drop Earrings

Gold plated is made to swing freely in our signature clover cut-out motif, with warm citrine colored glass stone dangles. Approximately 1.75" length, excluding ear wire. Gold vermeil ear wire. E105G \$49

Garden Party Chandelier Earrings

When you've got it, flaunt it with ornate, gold plated filigree dotted by enamel discs. 2.25" length. Gold vermeil ear wires.

c. Ivory & Coral E1007G \$54
d. Green & Gold E1007TU \$54

e. Gilda Links Earrings

Delicate hand-burnished precious metal links, you'll be wearing these for years. 2.25" length.

Gold vermeil E488V \$44
Sterling silver E488S \$39

f. Goa Earrings

A unique design of hand wire-wrapped turquoise and yellow quartz drop. 2.25" length. (see page 54 for matching necklace). E604 \$49

g. Gold Leaf Earrings

Gold plated leaves with delicate chain, 1.5" length. Gold vermeil ear wires, 1.5" length. E404 \$39

h. Azure Couture Earrings

Dramatic couture chandeliers of turquoise, green jade, and gold plated brass with gold vermeil ear wires. 3.75" length, excluding ear wires. E100TU \$79

i. Gilda Hoop Earrings

Delicate hand-burnished precious metal links. 2.25" length.

Gold vermeil E485 \$49
Sterling silver E485S \$44



Finish your look...



Try our extenders for even more length.

- | | |
|--------------|---------------|
| a. EX100 \$8 | d. EX104 \$7 |
| b. EX101 \$9 | e. EX103 \$7 |
| c. EX102 \$9 | f. EX105 \$12 |



Work for the woman. *You.*

Entrepreneur



my tribe



I AM STRONG

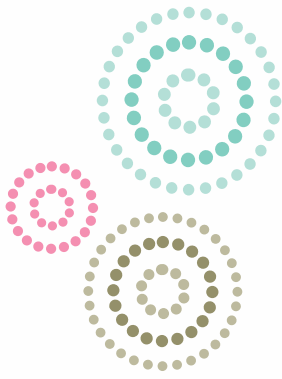
Luminous

Becoming yourself



Meaningful Moments





Your *personal* shopping experience awaits

Stella & Dot is like indulging yourself with your own personal shopper, gratis. Because you won't find our gorgeous jewelry in any old store. You can only get it through a trained Stylist who helps you find what flatters you and works best with your wardrobe. Always personal. Always no pressure. Always fun. Your Stylist is at your service with devoted attention and affordable luxuries— **at a Trunk Show, or through her online shop.**

Host a Trunk Show

Treat yourself. As the lucky hostess with the mostest, you invite some girlfriends. You pop open some sparkly drinks, share style tips, gab. Best of all, try on jewelry as much as you want. It's the ultimate in personal shopping, wouldn't you say? And, you're rewarded with \$100s in free jewelry, plus more shopping at half off. Let your Stylist shower you with attention and jewelry. Schedule a Trunk Show today.



Our average hostess receives **\$250 in free jewelry** and shops more at **half off!**

Free Stella & Dot jewelry rewards PLUS shop at ½ off

Based on a percentage of Trunk Show sales

With 4 unique guest orders and total Trunk Show sales of:	Hostess receives a % of sales in free jewelry of her choice.*	Plus ½ price items**
\$300–499.99	15% = \$45–75	2
\$500–999.99	20% = \$100–200	3
\$1,000+	25% = \$250+	4

Qualified Trunk Shows have 4 unique ordering guests.

*Not applicable to sale items

** ½ price items are capped at 4.

Hostess Rewards must be redeemed in one order on full price jewelry within 14 days of Trunk Show date.

Work for the woman. *You.*

Stella & Dot is what happened when women got together and dreamed up their ideal career. Recognized in the **New York Times** and the **Today Show**, it's not only a big idea, it's a smart business that actually works. Where else can you make \$1,000s per month working part-time from home? Or crank it up to full-time only when you want to? Where else can you earn a profit in a few weeks, give yourself a promotion, never get laid off, and have as swell a boss as you?



Start living
for a living.

\$199 launches your career.
Your **free \$350** sample
shopping spree is on us!
Ask your Stylist, or visit
stelladot.com, for details.

Finally *earn* what you're worth.

- ❖ Up to 30% commission.
- ❖ 50% off samples.
- ❖ Free jewelry, business supplies, rewards, and travel.
- ❖ See profit in just a few weeks.
- ❖ \$1,000s per month working part-time at home.
- ❖ Cash bonuses up to \$50k.
- ❖ Unlimited income on team sales.

Oh so *doable*.

- ❖ **No special skills required.** Not a salesperson, computer whiz, or fashionista? Not to worry. A smidge of enthusiasm goes a long way.
- ❖ **Hit the runway running.** Get savvy online training, e-business tools, and your own e-commerce website instantly. Learn as you earn.
- ❖ **Instant support network.** Our community is all about supporting each other. We're good like that.
- ❖ **Low start-up costs.** Start earning and growing profit right away.

You in?

Join us as a Stylist.

- ❖ **Flexible** so you can go manage another job or go on the school field trip.
- ❖ **Chic** because there's no reason not to be smart and gorgeous.
- ❖ **Fresh** since times have changed and smart businesses do too.
- ❖ **Fun** of course. Hello.

Don't just take our word for it. Read our Stylists' stories at stelladot.com.



“Stella & Dot is a people business that happens to sell smashing style. We are passionate about our customer experience and the modern opportunity we create for women. If you thrive on style and love, we just might be for you.”



Mike Lohner, Chairman



stella & dot
FOUNDATION



Foundation Bracelet

Dyed jade beads in an array of turquoise or pink gradients. Each comes with gold or silver plated Stella & Dot Foundation coin, signature dot disc and briolette stone. Stretchable bracelet adjusts to fit with a 2.25" inner diameter. Fits small to medium sized wrists.

- a. Pink B133PI \$39
- b. Turquoise B133TU \$39

Little Girl's Foundation Bracelet

Dyed jade beads in an array of turquoise or pink gradients. Each comes with gold or silver plated Stella & Dot Foundation coin with signature heart imprinted on the back of the coin. Stretchable bracelet adjusts to fit with a 1.75" inner diameter.

- c. Pink B146PI \$19
- d. Turquoise B146TU \$19

CREATE **POSITIVE CHANGE** IN WOMEN'S LIVES THROUGH EDUCATION & ECONOMIC **EMPOWERMENT.**

WE BELIEVE THAT EVERY WOMAN HAS WHAT IT TAKES TO CREATE THE LIFE SHE WANTS FOR HERSELF.

Through the sale of the Stella and Dot Foundation bracelets and through the generosity of your direct donations, we will support all three of these organizations, which in turn support our own foundation's mission to create positive change for women. All net proceeds of the Foundation Bracelets will go to the following charities. Please go to the foundation page on www.stelladot.com to learn more.



ACCION USA empowers low to moderate income women with training, resources and ongoing support to start and grow their business.



buildOn empowers people and transforms lives by partnering after-school service programs in the US with communities in developing countries to build schools.



Girls Incorporated is a national nonprofit youth organization dedicated to inspiring all girls to be strong, smart and bold.



The back of the large bracelet is embossed with the foundation logo, the little girl's bracelet has a heart on the back.



Join us at stelladot.com

We are Stella & Dot.

We are a company inspired by and created for strong women. Named after our beloved grandmothers, Stella & Dot honors that generation of women who crossed oceans, rolled up their sleeves, won the vote, raised kids, went off to work, and did it all with style and grace. Today, this is how they'd do it.

Wondering how to wear it? Find style videos with wardrobing tips for each piece of jewelry online in our **StyleWatch** section.

Pass along to a friend...



stella & dot™

A proud member of the Direct Selling Association



Printed on recycled paper
Please find a creative way to
reuse or recycle this catalog
Printed in USA

1860 El Camino Real, Suite 420, Burlingame, CA 94010 | 800.920.5893 | www.stelladot.com | ©2010 stella&dot